

The background image is a photograph of a coastal landscape. In the foreground, there is a sandy path or dune area with patches of dry, yellowish-brown grass and some small, dark shrubs. The path leads towards a flat, sandy beach that meets the ocean. The sky is filled with large, white, fluffy clouds, and the overall lighting suggests a bright, sunny day.

Outer Dowsing Offshore Wind

Environmental Statement

Chapter 14 Commercial Fisheries

Volume 2 Figures

Date: March 2025

Document Reference: 6.2.14

Pursuant to APFP Regulation: 5(2)(a)

Revision: 2.0

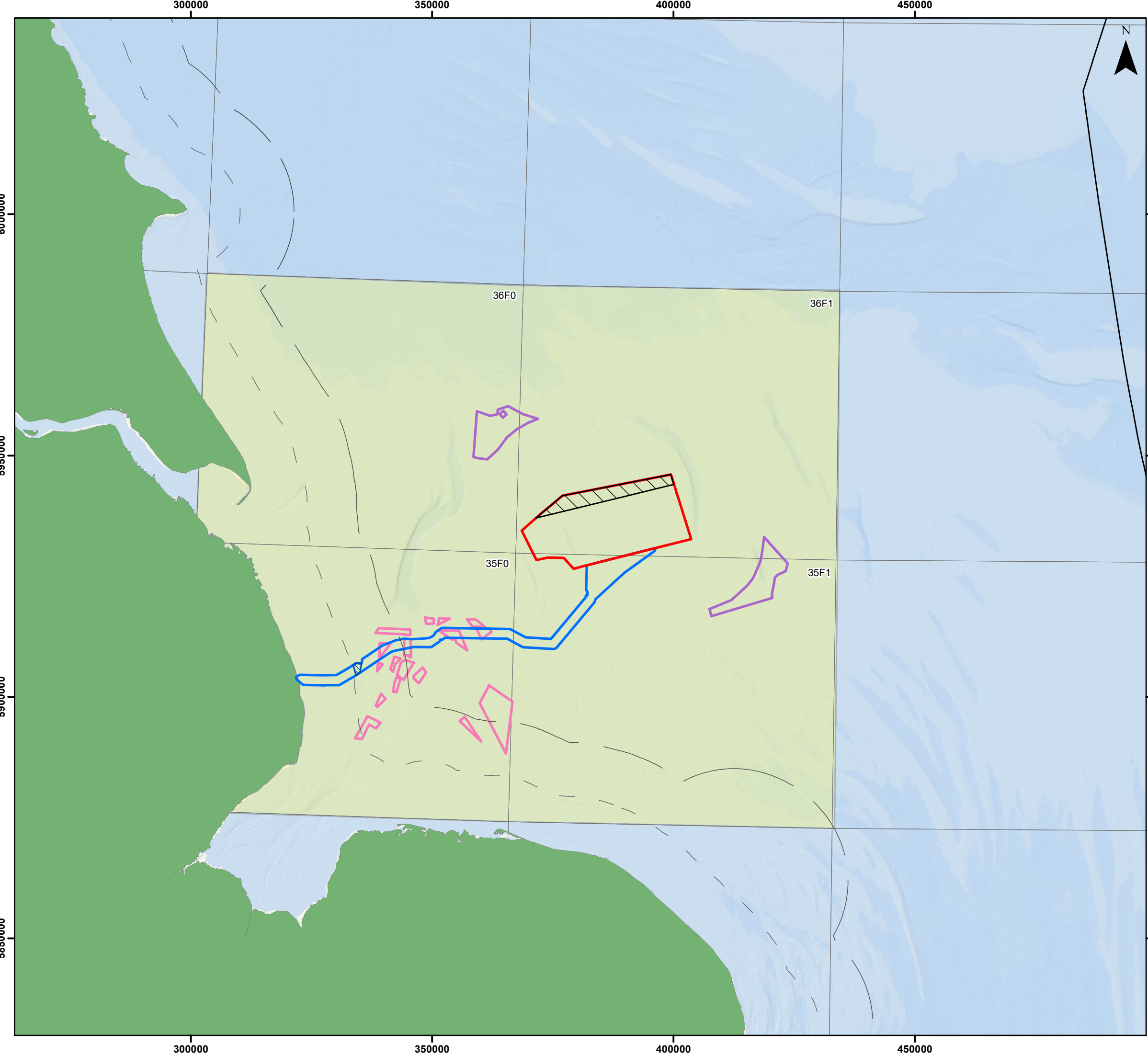
Company:		Outer Dowsing Offshore Wind		Asset:		Whole Asset	
Project:		Whole Wind Farm		Sub Project/Package:		Whole Asset	
Document Title or Description:		Chapter 14 Commercial Fisheries					
Internal Document Number:		PP1-ODOW-DEV-CS-FIG-0014_02		3 rd Party Doc No (If applicable):		N/A	
Rev No.	Date	Status / Reason for Issue	Author	Checked by	Reviewed by	Approved by	
01	March 2024	DCO Application	GoBe / SLR/ODOW	GoBe	Shepherd & Wedderburn	Outer Dowsing	
02	March 2025	Examination ES Update	GoBe / SLR/ODOW	GoBe	Shepherd & Wedderburn	Outer Dowsing	

Change Log

- Examination Update: updates to reflect, where relevant: clarifications to date in Examination; correcting errata; additional commitments made through Examination; and changes to status of or addition of cumulative projects.
- Figure 14.1 has been updated to reflect the inclusion of the Offshore Restricted Build Area and removal of the Northern Export Cable Corridor route

Table of Figures

- Figure 14.1 Commercial fisheries Study area, incorporating ICES rectangles 36F1, 35F1, 36F0 and 35F0 (document reference 6.2.14.1)

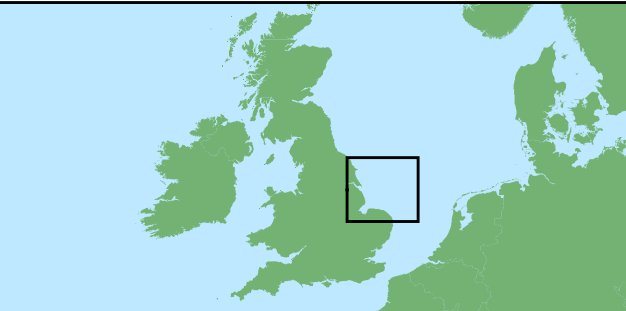


Legend

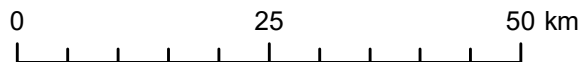
- Array Area
- Offshore Restricted Build Area
- Offshore Export Cable Corridor
- ORCP Area
- Artificial Nesting Structure Area
- Biogenic Reef Restoration Area
- Commercial Fisheries Study Area
- ICES Statistical Rectangles

Fishing Limits

- 6 NM
- 12 NM
- 200 NM



Coordinate System: WGS 1984 UTM Zone 31N



Scale: 1:750,000

A3 Page Size

Environmental Statement Version 2 Deadline 5

Commercial fisheries study area,
incorporating ICES rectangles
36F1, 35F1, 36F0 and 35F0

Figure 14.1



Date: 26/02/2025
Produced By: FN
Revision: 2.0



Contains ESRI Basemapping;
Esri, Garmin, GEBCO, NOAA
NGDC, and other contributors